



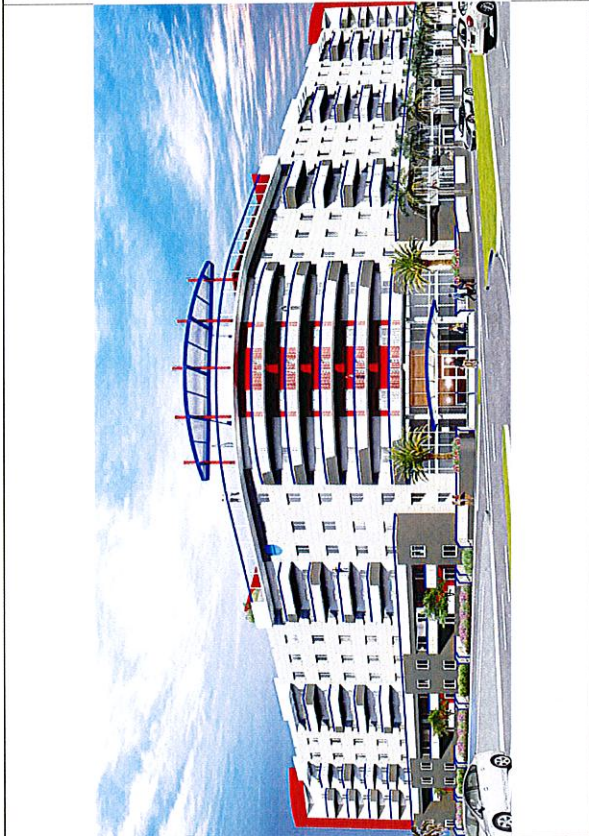
180 E DANIA BEACH BLVD.

LOCATION MAP

SCALE: N.T.S.

LIST OF DRAWINGS

- TITLE SHEET
- PLAT
- SURVEY
- C-1 CONCEPTUAL ENGINEER PLAN
- C-2 CIVIL ENGINEERING DETAILS
- C-3 CIVIL ENGINEERING DETAILS
- C-4 CIVIL ENGINEERING DETAILS
- C-4a STORMWATER POLLUTION PREVENTION
- C-5 CIVIL ENGINEERING DETAILS
- C-6 CIVIL ENGINEERING SPECS.
- SP-1 SITE PLAN
- SP-2 SITE PLAN DETAILS
- SP-3 SITE PLAN DETAILS
- MASTER SIGN PLAN
- LSP-1 LIFE SAFETY PLAN 1st FLOOR
- LSP-2 LIFE SAFETY PLAN 2nd FLOOR (TYPICAL)
- LSP-3 LIFE SAFETY PLAN 3rd FLOOR
- LSP-4 LIFE SAFETY PLAN 4th FLOOR
- LSP-5 LIFE SAFETY PLAN 5th FLOOR
- LSP-6 LIFE SAFETY PLAN 6th FLOOR
- LSP-7 LIFE SAFETY PLAN 7th FLOOR
- LSP-8 LIFE SAFETY PLAN 8th FLOOR
- LSP-9 LIFE SAFETY PLAN 9th FLOOR
- LSP-10 LIFE SAFETY PLAN 10th FLOOR
- LSP-11 LIFE SAFETY PLAN 11th FLOOR
- LSP-12 LIFE SAFETY PLAN 12th FLOOR
- LSP-13 LIFE SAFETY PLAN 13th FLOOR
- LSP-14 LIFE SAFETY PLAN 14th FLOOR
- LSP-15 LIFE SAFETY PLAN 15th FLOOR
- LSP-16 LIFE SAFETY PLAN 16th FLOOR
- LSP-17 LIFE SAFETY PLAN 17th FLOOR
- LSP-18 LIFE SAFETY PLAN 18th FLOOR
- LSP-19 LIFE SAFETY PLAN 19th FLOOR
- LSP-20 LIFE SAFETY PLAN 20th FLOOR
- LSP-21 LIFE SAFETY PLAN 21st FLOOR
- LSP-22 LIFE SAFETY PLAN 22nd FLOOR
- LSP-23 LIFE SAFETY PLAN 23rd FLOOR
- LSP-24 LIFE SAFETY PLAN 24th FLOOR
- LSP-25 LIFE SAFETY PLAN 25th FLOOR
- LSP-26 LIFE SAFETY PLAN 26th FLOOR
- LSP-27 LIFE SAFETY PLAN 27th FLOOR
- LSP-28 LIFE SAFETY PLAN 28th FLOOR
- LSP-29 LIFE SAFETY PLAN 29th FLOOR
- LSP-30 LIFE SAFETY PLAN 30th FLOOR
- LSP-31 LIFE SAFETY PLAN 31st FLOOR
- LSP-32 LIFE SAFETY PLAN 32nd FLOOR
- LSP-33 LIFE SAFETY PLAN 33rd FLOOR
- LSP-34 LIFE SAFETY PLAN 34th FLOOR
- LSP-35 LIFE SAFETY PLAN 35th FLOOR
- LSP-36 LIFE SAFETY PLAN 36th FLOOR
- LSP-37 LIFE SAFETY PLAN 37th FLOOR
- LSP-38 LIFE SAFETY PLAN 38th FLOOR
- LSP-39 LIFE SAFETY PLAN 39th FLOOR
- LSP-40 LIFE SAFETY PLAN 40th FLOOR
- LSP-41 LIFE SAFETY PLAN 41st FLOOR
- LSP-42 LIFE SAFETY PLAN 42nd FLOOR
- LSP-43 LIFE SAFETY PLAN 43rd FLOOR
- LSP-44 LIFE SAFETY PLAN 44th FLOOR
- LSP-45 LIFE SAFETY PLAN 45th FLOOR
- LSP-46 LIFE SAFETY PLAN 46th FLOOR
- LSP-47 LIFE SAFETY PLAN 47th FLOOR
- LSP-48 LIFE SAFETY PLAN 48th FLOOR
- LSP-49 LIFE SAFETY PLAN 49th FLOOR
- LSP-50 LIFE SAFETY PLAN 50th FLOOR
- LSP-51 LIFE SAFETY PLAN 51st FLOOR
- LSP-52 LIFE SAFETY PLAN 52nd FLOOR
- LSP-53 LIFE SAFETY PLAN 53rd FLOOR
- LSP-54 LIFE SAFETY PLAN 54th FLOOR
- LSP-55 LIFE SAFETY PLAN 55th FLOOR
- LSP-56 LIFE SAFETY PLAN 56th FLOOR
- LSP-57 LIFE SAFETY PLAN 57th FLOOR
- LSP-58 LIFE SAFETY PLAN 58th FLOOR
- LSP-59 LIFE SAFETY PLAN 59th FLOOR
- LSP-60 LIFE SAFETY PLAN 60th FLOOR
- LSP-61 LIFE SAFETY PLAN 61st FLOOR
- LSP-62 LIFE SAFETY PLAN 62nd FLOOR
- LSP-63 LIFE SAFETY PLAN 63rd FLOOR
- LSP-64 LIFE SAFETY PLAN 64th FLOOR
- LSP-65 LIFE SAFETY PLAN 65th FLOOR
- LSP-66 LIFE SAFETY PLAN 66th FLOOR
- LSP-67 LIFE SAFETY PLAN 67th FLOOR
- LSP-68 LIFE SAFETY PLAN 68th FLOOR
- LSP-69 LIFE SAFETY PLAN 69th FLOOR
- LSP-70 LIFE SAFETY PLAN 70th FLOOR
- LSP-71 LIFE SAFETY PLAN 71st FLOOR
- LSP-72 LIFE SAFETY PLAN 72nd FLOOR
- LSP-73 LIFE SAFETY PLAN 73rd FLOOR
- LSP-74 LIFE SAFETY PLAN 74th FLOOR
- LSP-75 LIFE SAFETY PLAN 75th FLOOR
- LSP-76 LIFE SAFETY PLAN 76th FLOOR
- LSP-77 LIFE SAFETY PLAN 77th FLOOR
- LSP-78 LIFE SAFETY PLAN 78th FLOOR
- LSP-79 LIFE SAFETY PLAN 79th FLOOR
- LSP-80 LIFE SAFETY PLAN 80th FLOOR
- LSP-81 LIFE SAFETY PLAN 81st FLOOR
- LSP-82 LIFE SAFETY PLAN 82nd FLOOR
- LSP-83 LIFE SAFETY PLAN 83rd FLOOR
- LSP-84 LIFE SAFETY PLAN 84th FLOOR
- LSP-85 LIFE SAFETY PLAN 85th FLOOR
- LSP-86 LIFE SAFETY PLAN 86th FLOOR
- LSP-87 LIFE SAFETY PLAN 87th FLOOR
- LSP-88 LIFE SAFETY PLAN 88th FLOOR
- LSP-89 LIFE SAFETY PLAN 89th FLOOR
- LSP-90 LIFE SAFETY PLAN 90th FLOOR
- LSP-91 LIFE SAFETY PLAN 91st FLOOR
- LSP-92 LIFE SAFETY PLAN 92nd FLOOR
- LSP-93 LIFE SAFETY PLAN 93rd FLOOR
- LSP-94 LIFE SAFETY PLAN 94th FLOOR
- LSP-95 LIFE SAFETY PLAN 95th FLOOR
- LSP-96 LIFE SAFETY PLAN 96th FLOOR
- LSP-97 LIFE SAFETY PLAN 97th FLOOR
- LSP-98 LIFE SAFETY PLAN 98th FLOOR
- LSP-99 LIFE SAFETY PLAN 99th FLOOR
- LSP-100 LIFE SAFETY PLAN 100th FLOOR
- TD-1 TREE DISPOSITION
- L-1 PROPOSED FIRST FLOOR LANDSCAPE PLAN
- L-2 PROPOSED SECOND FLOOR LANDSCAPE PLAN
- L-3 PROPOSED THIRD FLOOR LANDSCAPE PLAN
- L-4 PROPOSED FOURTH FLOOR LANDSCAPE PLAN
- L-5 PROPOSED FIFTH FLOOR LANDSCAPE PLAN
- L-6 PROPOSED SIXTH FLOOR LANDSCAPE PLAN
- L-7 PROPOSED SEVENTH FLOOR LANDSCAPE PLAN
- L-8 PROPOSED EIGHTH FLOOR LANDSCAPE PLAN
- L-9 PROPOSED NINTH FLOOR LANDSCAPE PLAN
- L-10 PROPOSED TENTH FLOOR LANDSCAPE PLAN
- L-11 PROPOSED ELEVENTH FLOOR LANDSCAPE PLAN
- L-12 PROPOSED TWELFTH FLOOR LANDSCAPE PLAN
- L-13 PROPOSED THIRTEENTH FLOOR LANDSCAPE PLAN
- L-14 PROPOSED FOURTEENTH FLOOR LANDSCAPE PLAN
- L-15 PROPOSED FIFTEENTH FLOOR LANDSCAPE PLAN
- L-16 PROPOSED SIXTEENTH FLOOR LANDSCAPE PLAN
- L-17 PROPOSED SEVENTEENTH FLOOR LANDSCAPE PLAN
- L-18 PROPOSED EIGHTEENTH FLOOR LANDSCAPE PLAN
- L-19 PROPOSED NINETEENTH FLOOR LANDSCAPE PLAN
- L-20 PROPOSED TWENTIETH FLOOR LANDSCAPE PLAN
- L-21 PROPOSED TWENTYFIRST FLOOR LANDSCAPE PLAN
- L-22 PROPOSED TWENTYSECOND FLOOR LANDSCAPE PLAN
- L-23 PROPOSED TWENTYTHIRD FLOOR LANDSCAPE PLAN
- L-24 PROPOSED TWENTYFOURTH FLOOR LANDSCAPE PLAN
- L-25 PROPOSED TWENTYFIFTH FLOOR LANDSCAPE PLAN
- L-26 PROPOSED TWENTYSIXTH FLOOR LANDSCAPE PLAN
- L-27 PROPOSED TWENTYSEVENTH FLOOR LANDSCAPE PLAN
- L-28 PROPOSED TWENTYEIGHTH FLOOR LANDSCAPE PLAN
- L-29 PROPOSED TWENTYNINTH FLOOR LANDSCAPE PLAN
- L-30 PROPOSED THIRTIETH FLOOR LANDSCAPE PLAN
- L-31 PROPOSED THIRTYFIRST FLOOR LANDSCAPE PLAN
- L-32 PROPOSED THIRTYSECOND FLOOR LANDSCAPE PLAN
- L-33 PROPOSED THIRTYTHIRD FLOOR LANDSCAPE PLAN
- L-34 PROPOSED THIRTYFOURTH FLOOR LANDSCAPE PLAN
- L-35 PROPOSED THIRTYFIFTH FLOOR LANDSCAPE PLAN
- L-36 PROPOSED THIRTYSIXTH FLOOR LANDSCAPE PLAN
- L-37 PROPOSED THIRTYSEVENTH FLOOR LANDSCAPE PLAN
- L-38 PROPOSED THIRTYEIGHTH FLOOR LANDSCAPE PLAN
- L-39 PROPOSED THIRTYNINTH FLOOR LANDSCAPE PLAN
- L-40 PROPOSED FORTIETH FLOOR LANDSCAPE PLAN
- L-41 PROPOSED FORTYFIRST FLOOR LANDSCAPE PLAN
- L-42 PROPOSED FORTYSECOND FLOOR LANDSCAPE PLAN
- L-43 PROPOSED FORTYTHIRD FLOOR LANDSCAPE PLAN
- L-44 PROPOSED FORTYFOURTH FLOOR LANDSCAPE PLAN
- L-45 PROPOSED FORTYFIFTH FLOOR LANDSCAPE PLAN
- L-46 PROPOSED FORTYSIXTH FLOOR LANDSCAPE PLAN
- L-47 PROPOSED FORTYSEVENTH FLOOR LANDSCAPE PLAN
- L-48 PROPOSED FORTYEIGHTH FLOOR LANDSCAPE PLAN
- L-49 PROPOSED FORTYNINTH FLOOR LANDSCAPE PLAN
- L-50 PROPOSED FIFTIETH FLOOR LANDSCAPE PLAN
- L-51 PROPOSED FIFTYFIRST FLOOR LANDSCAPE PLAN
- L-52 PROPOSED FIFTYSECOND FLOOR LANDSCAPE PLAN
- L-53 PROPOSED FIFTYTHIRD FLOOR LANDSCAPE PLAN
- L-54 PROPOSED FIFTYFOURTH FLOOR LANDSCAPE PLAN
- L-55 PROPOSED FIFTYFIFTH FLOOR LANDSCAPE PLAN
- L-56 PROPOSED FIFTYSIXTH FLOOR LANDSCAPE PLAN
- L-57 PROPOSED FIFTYSEVENTH FLOOR LANDSCAPE PLAN
- L-58 PROPOSED FIFTYEIGHTH FLOOR LANDSCAPE PLAN
- L-59 PROPOSED FIFTYNINTH FLOOR LANDSCAPE PLAN
- L-60 PROPOSED SIXTIETH FLOOR LANDSCAPE PLAN
- L-61 PROPOSED SIXTYFIRST FLOOR LANDSCAPE PLAN
- L-62 PROPOSED SIXTYSECOND FLOOR LANDSCAPE PLAN
- L-63 PROPOSED SIXTYTHIRD FLOOR LANDSCAPE PLAN
- L-64 PROPOSED SIXTYFOURTH FLOOR LANDSCAPE PLAN
- L-65 PROPOSED SIXTYFIFTH FLOOR LANDSCAPE PLAN
- L-66 PROPOSED SIXTYSIXTH FLOOR LANDSCAPE PLAN
- L-67 PROPOSED SIXTYSEVENTH FLOOR LANDSCAPE PLAN
- L-68 PROPOSED SIXTYEIGHTH FLOOR LANDSCAPE PLAN
- L-69 PROPOSED SIXTYNINTH FLOOR LANDSCAPE PLAN
- L-70 PROPOSED SEVENTIETH FLOOR LANDSCAPE PLAN
- L-71 PROPOSED SEVENTYFIRST FLOOR LANDSCAPE PLAN
- L-72 PROPOSED SEVENTYSECOND FLOOR LANDSCAPE PLAN
- L-73 PROPOSED SEVENTYTHIRD FLOOR LANDSCAPE PLAN
- L-74 PROPOSED SEVENTYFOURTH FLOOR LANDSCAPE PLAN
- L-75 PROPOSED SEVENTYFIFTH FLOOR LANDSCAPE PLAN
- L-76 PROPOSED SEVENTYSIXTH FLOOR LANDSCAPE PLAN
- L-77 PROPOSED SEVENTYSEVENTH FLOOR LANDSCAPE PLAN
- L-78 PROPOSED SEVENTYEIGHTH FLOOR LANDSCAPE PLAN
- L-79 PROPOSED SEVENTYNINTH FLOOR LANDSCAPE PLAN
- L-80 PROPOSED EIGHTIETH FLOOR LANDSCAPE PLAN
- L-81 PROPOSED EIGHTYFIRST FLOOR LANDSCAPE PLAN
- L-82 PROPOSED EIGHTYSECOND FLOOR LANDSCAPE PLAN
- L-83 PROPOSED EIGHTYTHIRD FLOOR LANDSCAPE PLAN
- L-84 PROPOSED EIGHTYFOURTH FLOOR LANDSCAPE PLAN
- L-85 PROPOSED EIGHTYFIFTH FLOOR LANDSCAPE PLAN
- L-86 PROPOSED EIGHTYSIXTH FLOOR LANDSCAPE PLAN
- L-87 PROPOSED EIGHTYSEVENTH FLOOR LANDSCAPE PLAN
- L-88 PROPOSED EIGHTYEIGHTH FLOOR LANDSCAPE PLAN
- L-89 PROPOSED EIGHTYNINTH FLOOR LANDSCAPE PLAN
- L-90 PROPOSED NINETYTH FLOOR LANDSCAPE PLAN
- L-91 PROPOSED NINETYFIRST FLOOR LANDSCAPE PLAN
- L-92 PROPOSED NINETYSECOND FLOOR LANDSCAPE PLAN
- L-93 PROPOSED NINETYTHIRD FLOOR LANDSCAPE PLAN
- L-94 PROPOSED NINETYFOURTH FLOOR LANDSCAPE PLAN
- L-95 PROPOSED NINETYFIFTH FLOOR LANDSCAPE PLAN
- L-96 PROPOSED NINETYSIXTH FLOOR LANDSCAPE PLAN
- L-97 PROPOSED NINETYSEVENTH FLOOR LANDSCAPE PLAN
- L-98 PROPOSED NINETYEIGHTH FLOOR LANDSCAPE PLAN
- L-99 PROPOSED NINETYNINTH FLOOR LANDSCAPE PLAN
- L-100 PROPOSED HUNDRETH FLOOR LANDSCAPE PLAN
- PH-1 PHOTOMETRIC SITE PLAN
- PH-2 PHOTOMETRIC THIRD FLOOR PLAN



PROPERTY DESCRIPTION

ALL OF BLOCK 1, OF "DANIA BEACH SUBDIVISION", ACCORDING TO THE PLAT THEREOF AS RECORDED IN PLAT BOOK 8, AT PAGE 1 OF THE PUBLIC RECORDS OF BROWARD COUNTY, FLORIDA, LESS AND EXCEPT THE NORTH 5 FEET THEREOF. ALL OF BLOCK 1, INCLUDING BUT NOT LIMITED TO THOSE AREAS SHOWN AS PRIVATE DRIVE AND HOTEL PARK, LYING EAST OF AND ADJACENT TO SAID BLOCK 1, ALL LYING IN THE PLAT OF DANIA BEACH SUBDIVISION, ACCORDING TO THE PLAT THEREOF AS RECORDED IN PLAT BOOK 8, PAGE 1, OF THE PUBLIC RECORDS OF BROWARD COUNTY, FLORIDA, LESS THEREFROM THE NORTH 5 FEET THEREOF FOR ROADWAY PURPOSES.

" DANIA PLACE " @ Dania Beach
180 E. DANIA BEACH BLVD, DANIA BEACH , FL.33004

OWNER:

VILLAGE AT DANIA BEACH LLC
12895 S.W. 132nd STREET , suite 202
MIAMI , FL 33186
PHONE: 305-255-5527
E-MAIL: elipess@villageatdania.com

ARCHITECT:



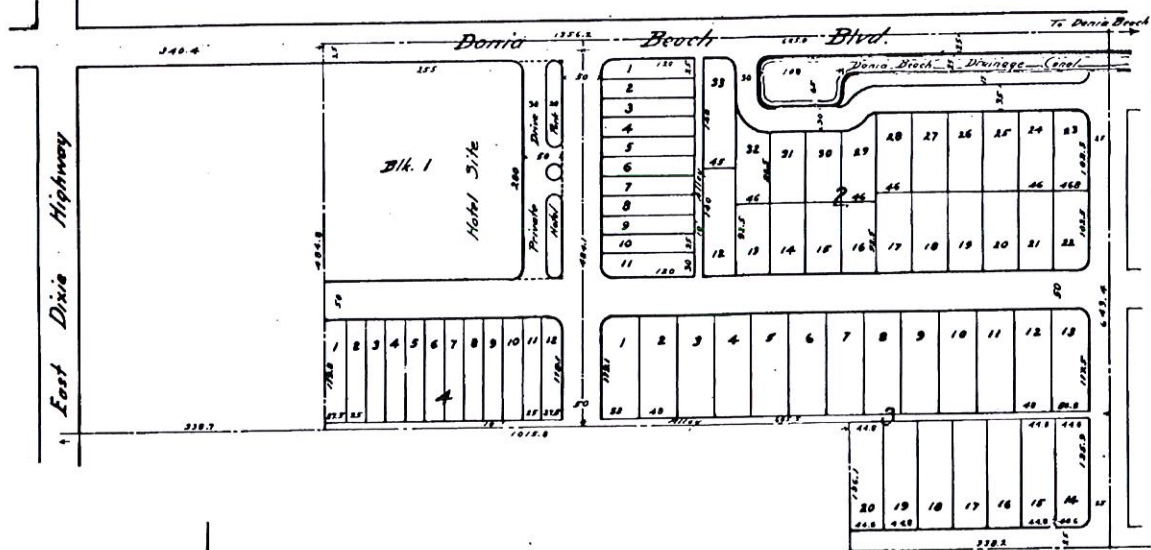
SOUTHEAST ARCHITECTS SERVICES, INC.
4310 W. BROWARD BLVD. - PLANTATION, FL - 33317
1418524/797-2824 1 fax: (954)797-2847
Email: bsuas@architects.com

QUEST
Quest Engineering Services & Testing, Inc.
2727 NW 10th Street - Fort Lauderdale, FL - 33309
PH: (954) 550-2800 Fax: (954) 550-2838
sa@questengg.com

MARTIN PILOTE
GLOBE ENGINEERING, INC.
CIVIL ENGINEERING CONSULTANT
4809 SW 138 Ave, Ste 507-F1, Lauderdale FL - 33309
PH: (954) 102-7028 Fax: (888) 662-7740
martin@civilengineer.us

KIM MOYERS
Landscape Architect
4808 NE 10th Ave - Oakland Park, FL - 33324
PH: (954) 92-0609 kmoyers@dmvill.com

45691



DANIA BEACH SUBDIVISION
 DANIA - FLORIDA
 A.J. RYAN - WILLIAM BECKER - M.E. HOFFMAN
 TITLE IN
 FORT LAUDERDALE BANK AND TRUST CO. TRUSTEE.

STATE OF FLORIDA
 COUNTY OF BROWARD
 I HEREBY CERTIFY that this is a true and correct copy of a map or plat as the same appears of record in Plat Book 8 of the public record of Broward County, Florida. Witness my hand and official seal of said County at Fort Lauderdale, Fla. this 24th day of FEB 1925.

L. A. HESTER
L. A. Hester



Know All Men By These Presents:-
 That the Fort Lauderdale Bank and Trust Company a corporation existing under the laws of the State of Florida, acting as trustee, has caused the herewith described lands to be subdivided in the manner shown on the attached plat, to be known as Dania Beach Subdivision.

All streets, excepting those marked private drive, and all alleys, or parts thereof, are hereby dedicated to the perpetual use of the public as thoroughfares, reserving to ourselves, our legal representatives, or assigns, owners of abutting property, the reversion or reversions thereof, whenever discontinued by law.

In Testimony Whereof, the Fort Lauderdale Bank and Trust Company, by authority of its Board of Directors, has caused these presents to be signed by its President and attested by its Asst. Cashier, and the corporate seal of the said company attached all on this 23rd day of May, A.D. 1925.

W.C. Kyle
 PRESIDENT

Description of Land:-
 East 1/2 of NE 1/4 of SW 1/4 of SE 1/4
 North 1/2 of SW 1/4 of NE 1/4 of SW 1/4 of SE 1/4; and North 1/2 of SE 1/4 of NW 1/4 of SW 1/4 of SE 1/4;
 NE 1/4 of NW 1/4 of SW 1/4 of SE 1/4; and NW 1/4 of NE 1/4 of SW 1/4 of SE 1/4 all in Sec. 34-7503-142E in Broward County, Florida

State of Florida
 County of Broward
 I hereby certify that the attached plat is a true and correct plat of Dania Beach Subdivision to the best of my knowledge and belief.

In Witness Whereof, I have hereunto set my hand and affixed my seal this 28th day of May, A.D. 1925.

J. J. Davis
 CLERK

State of Florida
 County of Broward
 This day personally appeared before me, a Notary Public W.C. Kyle and V.C. Sherrin, to me well known, and acknowledged that they are president and assistant respectively, of the Fort Lauderdale Bank and Trust Company, that they executed and signed the above instrument of dedication, as trustee, by authority of its Board of Directors, for the purpose and intentions therein set forth.

In Witness Whereof, I have hereunto set my hand and affixed my seal this 23rd day of May, A.D. 1925.

W.C. Kyle
 PRESIDENT

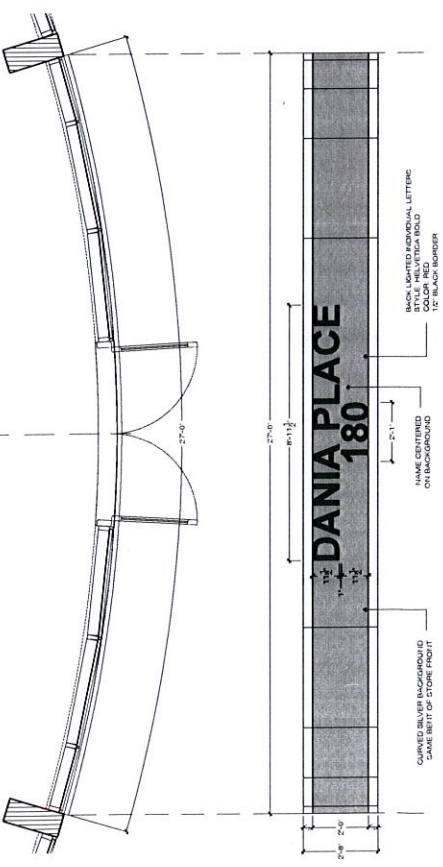
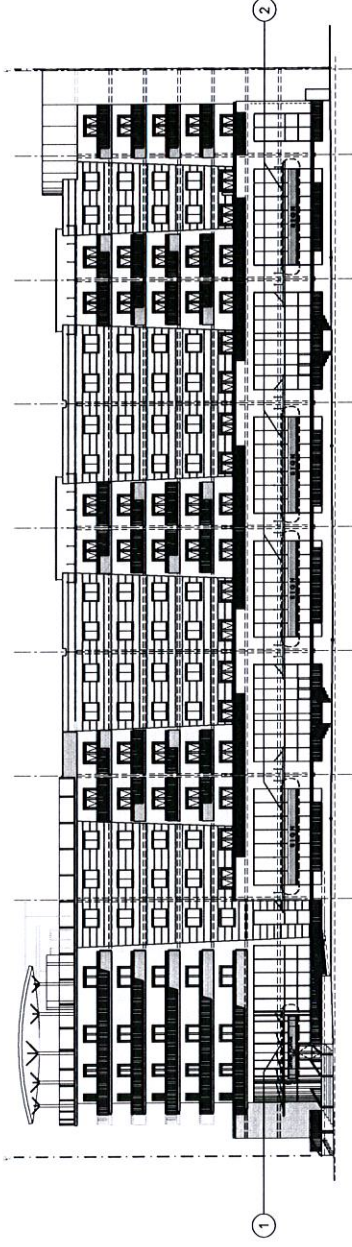
STATE OF FLORIDA
 COUNTY OF BROWARD
 This instrument was filed for record on this 28th day of May, 1925, and recorded in book 8 of Plat on page 45691.
 RECORD VERIFIED
 J. J. Davis
 Clerk of Circuit Court
 Deputy Clerk



H.C. Davis - C.E.
 FORT LAUDERDALE FLORIDA
 SCALE 1" = 100'
 MAY 1925
 DRAWN BY E.C. BROWN

KEY ELEVATION - NORTH ELEVATION / E. DANIA BEACH BLVD

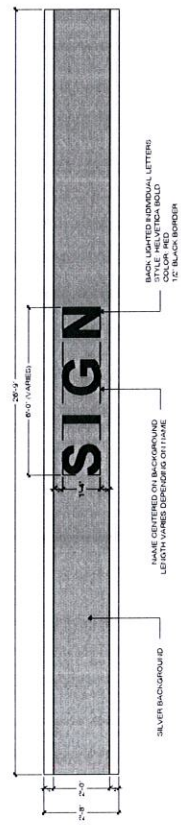
SCALE: 1/16" = 1'-0"



REQUIRED: 1 1/2" H. OF BLDG. - 1 1/2 FT. (SIGN PRIMARY STREET)
 REQUIRED: 20-30" H. OF BLDG.
 PROVIDED: 27'-0" L. H. FT. - 18 1/2 FT.

1 SIGN CRITERIA - BUILDING NAME

SCALE: 1/2" = 1'-0"



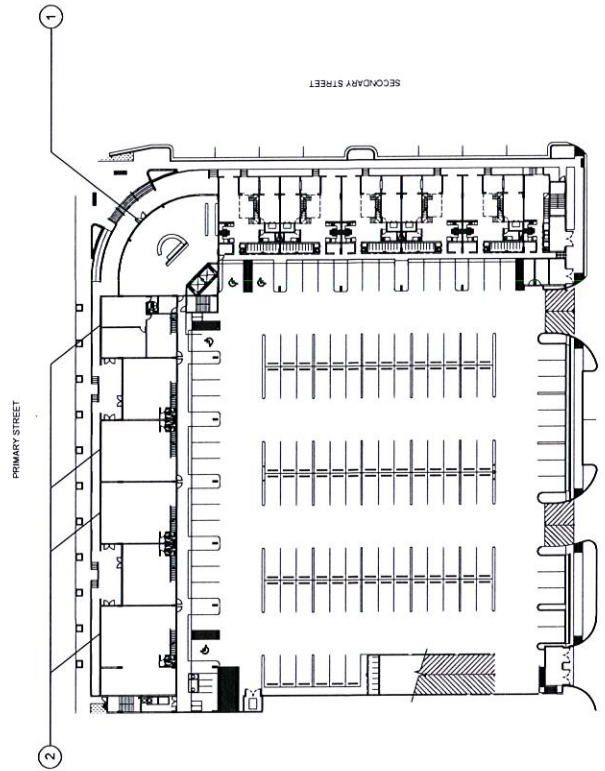
REQUIRED: 1 1/2" H. OF BLDG. - 1 1/2 FT. (SIGN PRIMARY STREET)
 REQUIRED: 20-30" H. OF BLDG.
 PROVIDED: 28'-9" L. H. FT. - 7 3/4 1/2 FT. (NAME) DEPENDING ON HEIGHT UP TO 28.75 1/2 FT.)

2 SIGN CRITERIA - RETAIL / RESTAURANT

SCALE: 1/2" = 1'-0"

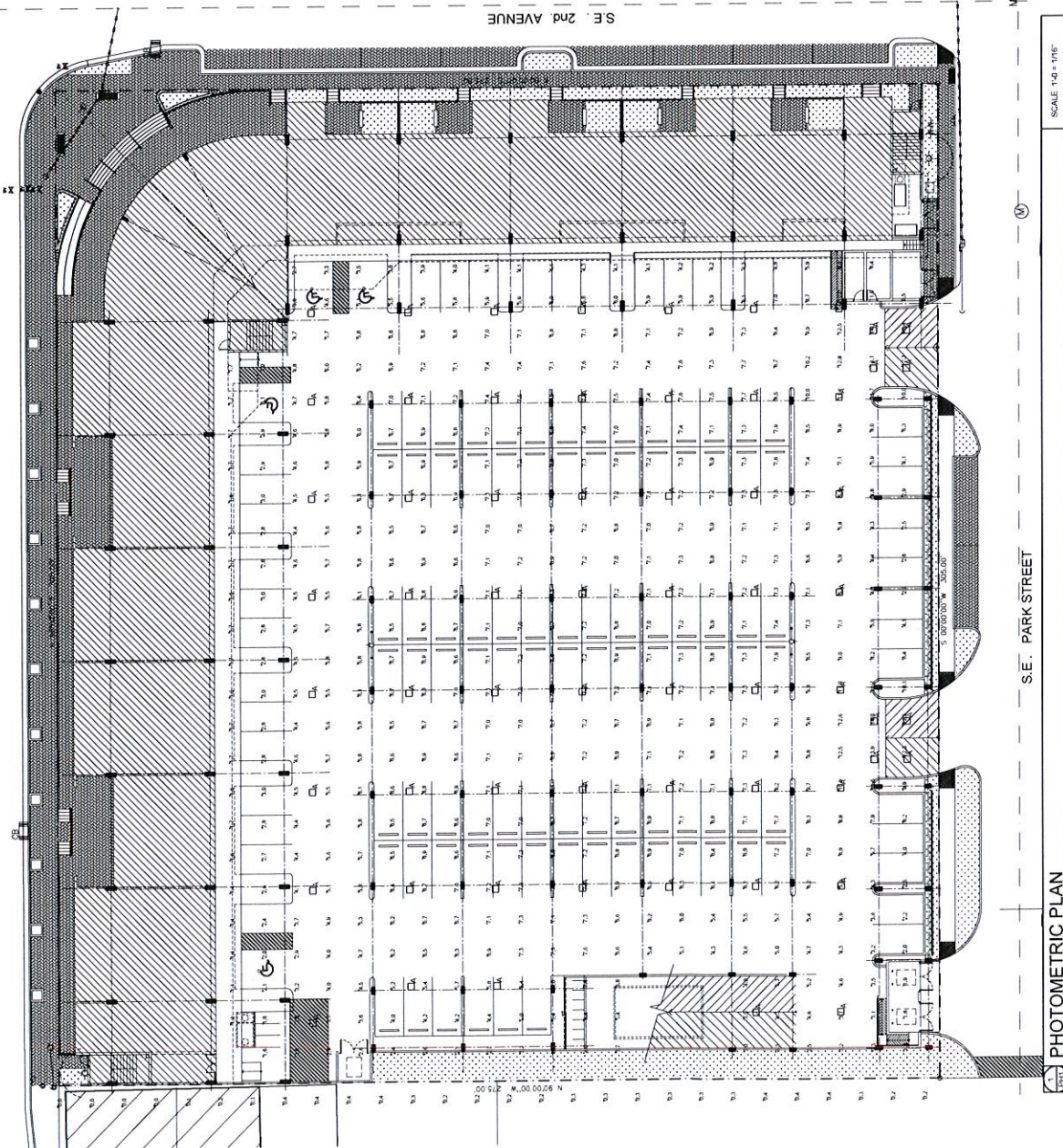
KEY FLOOR PLAN

SCALE: 1/32" = 1'-0"



SHEET NUMBER MASTER SIGN PLAN	PROJECT NUMBER 1513
	DRAWN JCP
	DATE 08/11/11
	180 E. Dania Beach Blvd DANIA BEACH, FL 33004
SOUTH EAST ARCHITECTS SERVICES, INC. 400 WEST BROWARD AVENUE SUITE 100 FORT LAUDERDALE, FL 33307 TEL: 772.437.1100 FAX: 772.437.1107 WWW.SOUTHSEASTARCHITECTS.COM	33004
REVISIONS	33004

EAST DANIA BEACH BOULEVARD - STATE ROAD A1A



PHOTOMETRIC PLAN

S.E. PARK STREET

S.E. 2nd AVENUE

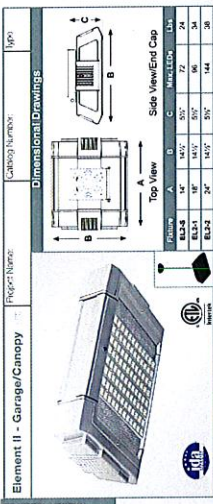
SCALE: 1/8" = 1'-0"

LUMINAIRE SCHEDULE

Symbol	Label	Qty	Catalog Number	File	Lumens	LF	Watts
□	A	66	VISIONAIRE LIGHTING EL2-1 TSM 7ZLC 3 55K UNV CM COLOR (SURFACE MOUNT)	el2_1_TSM_7ZLC_350mm_35ules	Absolute 0.75	84	84

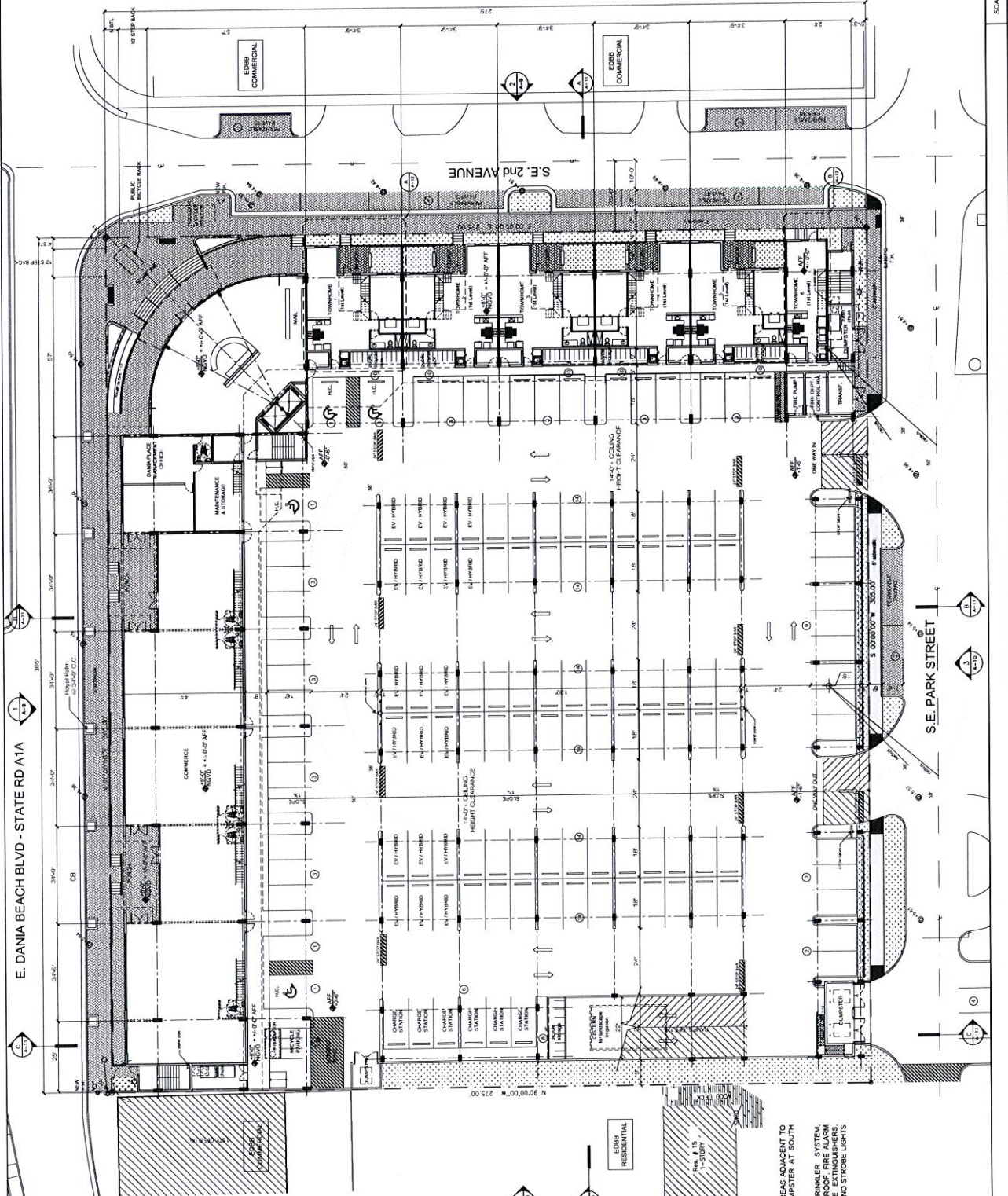
STATISTICS

Description	Avg	Min	Max/Min	Avg/Min
Garage - Ground Floor	5.8 fc	1.4 fc	8.4 fc	4.1:1



LED Data Chart for 5500K

Beam Angle	Beam Diameter @ 100'	Beam Diameter @ 200'	Beam Diameter @ 300'	Beam Diameter @ 400'	Beam Diameter @ 500'	Beam Diameter @ 600'	Beam Diameter @ 700'	Beam Diameter @ 800'	Beam Diameter @ 900'	Beam Diameter @ 1000'	Beam Diameter @ 1100'	Beam Diameter @ 1200'	Beam Diameter @ 1300'	Beam Diameter @ 1400'	Beam Diameter @ 1500'	Beam Diameter @ 1600'	Beam Diameter @ 1700'	Beam Diameter @ 1800'	Beam Diameter @ 1900'	Beam Diameter @ 2000'
4.0	4.0	8.0	12.0	16.0	20.0	24.0	28.0	32.0	36.0	40.0	44.0	48.0	52.0	56.0	60.0	64.0	68.0	72.0	76.0	80.0
6.0	6.0	12.0	18.0	24.0	30.0	36.0	42.0	48.0	54.0	60.0	66.0	72.0	78.0	84.0	90.0	96.0	102.0	108.0	114.0	120.0
8.0	8.0	16.0	24.0	32.0	40.0	48.0	56.0	64.0	72.0	80.0	88.0	96.0	104.0	112.0	120.0	128.0	136.0	144.0	152.0	160.0
10.0	10.0	20.0	30.0	40.0	50.0	60.0	70.0	80.0	90.0	100.0	110.0	120.0	130.0	140.0	150.0	160.0	170.0	180.0	190.0	200.0
12.0	12.0	24.0	36.0	48.0	60.0	72.0	84.0	96.0	108.0	120.0	132.0	144.0	156.0	168.0	180.0	192.0	204.0	216.0	228.0	240.0
14.0	14.0	28.0	42.0	56.0	70.0	84.0	98.0	112.0	126.0	140.0	154.0	168.0	182.0	196.0	210.0	224.0	238.0	252.0	266.0	280.0
16.0	16.0	32.0	48.0	64.0	80.0	96.0	112.0	128.0	144.0	160.0	176.0	192.0	208.0	224.0	240.0	256.0	272.0	288.0	304.0	320.0
18.0	18.0	36.0	54.0	72.0	90.0	108.0	126.0	144.0	162.0	180.0	198.0	216.0	234.0	252.0	270.0	288.0	306.0	324.0	342.0	360.0
20.0	20.0	40.0	60.0	80.0	100.0	120.0	140.0	160.0	180.0	200.0	220.0	240.0	260.0	280.0	300.0	320.0	340.0	360.0	380.0	400.0
22.0	22.0	44.0	66.0	88.0	110.0	132.0	154.0	176.0	198.0	220.0	242.0	264.0	286.0	308.0	330.0	352.0	374.0	396.0	418.0	440.0
24.0	24.0	48.0	72.0	96.0	120.0	144.0	168.0	192.0	216.0	240.0	264.0	288.0	312.0	336.0	360.0	384.0	408.0	432.0	456.0	480.0
26.0	26.0	52.0	78.0	104.0	136.0	168.0	196.0	224.0	252.0	280.0	308.0	336.0	364.0	392.0	420.0	448.0	476.0	504.0	532.0	560.0
28.0	28.0	56.0	84.0	112.0	144.0	176.0	204.0	232.0	260.0	288.0	316.0	344.0	372.0	400.0	428.0	456.0	484.0	512.0	540.0	568.0
30.0	30.0	60.0	90.0	120.0	156.0	192.0	220.0	248.0	276.0	304.0	332.0	360.0	388.0	416.0	444.0	472.0	500.0	528.0	556.0	584.0
32.0	32.0	64.0	96.0	128.0	168.0	208.0	236.0	264.0	292.0	320.0	348.0	376.0	404.0	432.0	460.0	488.0	516.0	544.0	572.0	600.0
34.0	34.0	68.0	104.0	136.0	180.0	216.0	244.0	272.0	300.0	328.0	356.0	384.0	412.0	440.0	468.0	496.0	524.0	552.0	580.0	608.0
36.0	36.0	72.0	112.0	144.0	192.0	224.0	252.0	280.0	308.0	336.0	364.0	392.0	420.0	448.0	476.0	504.0	532.0	560.0	588.0	616.0
38.0	38.0	76.0	120.0	152.0	204.0	232.0	260.0	288.0	316.0	344.0	372.0	400.0	428.0	456.0	484.0	512.0	540.0	568.0	596.0	624.0
40.0	40.0	80.0	128.0	160.0	216.0	244.0	272.0	300.0	328.0	356.0	384.0	412.0	440.0	468.0	496.0	524.0	552.0	580.0	608.0	636.0
42.0	42.0	84.0	136.0	168.0	224.0	252.0	280.0	308.0	336.0	364.0	392.0	420.0	448.0	476.0	504.0	532.0	560.0	588.0	616.0	644.0
44.0	44.0	88.0	144.0	176.0	232.0	260.0	288.0	316.0	344.0	372.0	400.0	428.0	456.0	484.0	512.0	540.0	568.0	596.0	624.0	652.0
46.0	46.0	92.0	152.0	184.0	240.0	268.0	296.0	324.0	352.0	380.0	408.0	436.0	464.0	492.0	520.0	548.0	576.0	604.0	632.0	660.0
48.0	48.0	96.0	160.0	192.0	248.0	276.0	304.0	332.0	360.0	388.0	416.0	444.0	472.0	500.0	528.0	556.0	584.0	612.0	640.0	668.0
50.0	50.0	100.0	168.0	200.0	256.0	284.0	312.0	340.0	368.0	396.0	424.0	452.0	480.0	508.0	536.0	564.0	592.0	620.0	648.0	676.0
52.0	52.0	104.0	176.0	208.0	264.0	292.0	320.0	348.0	376.0	404.0	432.0	460.0	488.0	516.0	544.0	572.0	600.0	628.0	656.0	684.0
54.0	54.0	108.0	184.0	216.0	272.0	300.0	328.0	356.0	384.0	412.0	440.0	468.0	496.0	524.0	552.0	580.0	608.0	636.0	664.0	692.0
56.0	56.0	112.0	192.0	224.0	280.0	308.0	336.0	364.0	392.0	420.0	448.0	476.0	504.0	532.0	560.0	588.0	616.0	644.0	672.0	700.0
58.0	58.0	116.0	200.0	232.0	288.0	316.0	344.0	372.0	400.0	428.0	456.0	484.0	512.0	540.0	568.0	596.0	624.0	652.0	680.0	708.0
60.0	60.0	120.0	208.0	240.0	296.0	324.0	352.0	380.0	408.0	436.0	464.0	492.0	520.0	548.0	576.0	604.0	632.0	660.0	688.0	716.0
62.0	62.0	124.0	216.0	248.0	304.0	332.0	360.0	388.0	416.0	444.0	472.0	500.0	528.0	556.0	584.0	612.0	640.0	668.0	696.0	724.0
64.0	64.0	128.0	224.0	256.0	312.0	340.0	368.0	396.0	424.0	452.0	480.0	508.0	536.0	564.0	592.0	620.0	648.0	676.0	704.0	732.0
66.0	66.0	132.0	232.0	264.0	320.0	348.0	376.0	404.0	432.0	460.0	488.0	516.0	544.0	572.0	600.0	628.0	656.0	684.0	712.0	740.0
68.0	68.0	136.0	240.0	272.0	328.0	356.0	384.0	412.0	440.0	468.0	496.0	524.0	552.0	580.0	608.0	636.0	664.0	692.0	720.0	748.0
70.0	70.0	140.0	248.0	280.0	336.0	364.0	392.0	420.0	448.0	476.0	504.0	532.0	560.0	588.0	616.0	644.0	672.0	700.0	728.0	756.0
72.0	72.0	144.0	256.0	288.0	344.0	372.0	400.0	428.0	456.0	484.0	512.0	540.0	568.0	596.0	624.0	652.0	680.0	708.0	736.0	764.0
74.0	74.0	148.0	264.0	296.0	352.0	380.0	408.0	436.0	464.0	492.0	520.0	548.0	576.0	604.0	632.0	660.0	688.0	716.0	744.0	772.0
76.0	76.0	152.0	272.0	304.0	360.0	388.0	416.0	444.0	472.0	500.0	528.0	556.0	584.0	612.0	640.0	668.0	696.0	724.0	752.0	780.0
78.0	78.0	156.0	280.0	312.0	368.0	396.0	424.0	452.0	480.0	508.0	536.0	564.0	592.0	620.0	648.0	676.0	704.0	732.0	760.0	788.0
80.0	80.0	160.0	288.0	320.0	376.0	404.0	432.0	460.0	488.0	516.0	544.0	572.0	600.0	628.0	656.0	684.0	712.0	740.0	768.0	796.0
82.0	82.0	164.0	296.0	328.0	384.0	412.0	440.0	468.0	496.0	524.0	552.0	580.0	608.0	636.0	664.0	692.0	720.0	748.0	776.0	804.0
84.0	84.0	168.0	304.0	336.0	392.0	420.0	448.0	476.0	504.0	532.0	560.0	588.0	616.0	644.0	672.0	700.0	728.0	756.0	784.0	812.0
86.0	86.0	172.0	312.0	344.0	400.0	428.0	456.0	484.0	512.0	540.0	568.0	596.0	624.0	652.0	680.0	708.0	736.0	764.0	792.0	820.0
88.0	88.0	176.0	320.0	352.0	408.0	436.0	464.0	492.0	520.0	548.0	576.0	604.0	632.0	660.0	688.0	716.0	744.0	772.0	800.0	828.0
90.0	90.0	180.0	328.0	360.0	416.0	444.0	472.0	500.0	528.0	556.0	584.0	612.0	640.0	668.0	696.0	724.0	752.0	780.0	808.0	836.0
92.0	92.0	184.0	336.0	368.0	424.0	452.0	480.0	508.0	536.0	564.0	592.0	620.0	648.0	676.0	704.0	732.0	760.0	788.0	816.0	844.0
94.0	94.0	188.0	344.0	376.0	432.0	460.0	488.0	516.0	544.0	572.0	600.0	628.0	656.0	684.0	712.0	740.0	768.0	796.0	824.0	852.0
96.0	96.0	192.0	352.0	384.0	440.0	468.0	496.0	524.0	552.0	580.0	608.0	636.0	664.0	692.0	720.0	748.0	776.0	804.0	832.0	860.0
98.0	98.0	196.0	360.0	392.0	448.0	476.0	504.0	532.0	560.0	588.0	616.0	644.0	672.0	700.0	728.0	75				



SCALE: 1/8" = 1'-0"

FIRST FLOOR

NOTES:
 TRASH REMOVAL: 2 GARBAGE CHUTES AT AREAS ADJACENT TO END OF CORRIDOR NEAR DUMPSTER AT SOUTH WEST CORNER OF SITE ON PARK AVE. S.
 FIRE DEPARTMENTS: SPRINKLER, FIRE ALARMS, SYSTEMS WITH ENJOINER PANEL AT LOBBY, FIRE EXTINGUISHERS, EMERGENCY LIGHTING, EXIT SIGNS, HORNS AND STROBE LIGHTS ALL AS REQUIRED BY CODE.

- LEGEND**
- ▲ FIRE HYDRANT
 - ⊕ FIRE DEPT. CONNECT.
 - ⊕ FIRE ALARM PULL STATION
 - ⊕ EXTINGUISHER
 - ⊕ WATER METER & BACKFLOW

CONCEPTUAL CIVIL ENGINEERING PLAN

DANIA PLACE
180 EAST DANIA BOULEVARD
DANIA BEACH, Florida

180 EAST DANIA BOULEVARD
DANIA BEACH, Florida

Globe Engineering, Inc.
Civil Engineering - Land Planning - Construction Management
4538 SW 43rd Avenue, Suite 509
Miami, FL 33155
Phone: 954-918-7658
Fax: 954-918-7658
www.globeeng.com

Certificate of Authorization No. 9604
Professional Engineer License No. 15992

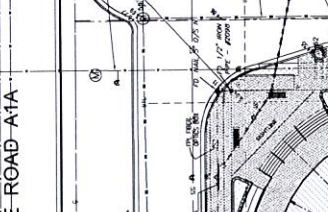
DATE: 10-29-2010
PROJECT NO: 2013-039
DRAWING NAME: C-1
SCALE: AS SHOWN
SHEET NO: 1 OF 3

LEGEND:

[Symbol]	SPECIFICATIONS FOR ASPHALT SURFACE PAVEMENT SECTION SHALL BE 1-1/2" THICK 5-3 ASPHALT IN 2 LIFTS, OVER 8" THICK LIME ROCK SUBGRADE AND LIME ROCK BASE SHALL BE 4" THICK LIME ROCK IN 2 LIFTS, OVER 4" THICK LIME ROCK LIME ROCK BASE PRIOR TO FIRST ASPHALT LIFT, AND BETWEEN ASPHALT LIFTS.	DRY RETENTION AREA
[Symbol]	ON-SITE PAVEMENT-CONCRETE. REFER TO STRUCTURAL PLANS (BY OTHERS)	ET EXFILTRATION TRENCH
[Symbol]	PROPERTY LINE	M.H. MANHOLE
[Symbol]	RODGE LINE	EXIST. EXISTING
[Symbol]	EXISTING ELEVATION	SEAN SANITARY
[Symbol]	PROPOSED ELEVATION	TC TOP OF CURB
[Symbol]	DRAINAGE FLOW ARROW	TP TOP OF PAVEMENT
[Symbol]	M.H. AND STRUCTURE NUMBER	C.O. CLEAN OUT
[Symbol]	24" STOP BAR	ET EXFILTRATION TRENCH
[Symbol]	3" STOP SIGN (41-1)	R.E. RIM ELEVATION
[Symbol]		W WIDE
[Symbol]		D DEEP

NOTES:

1. LOCATIONS FOR AND MATERIALS OF THE EXISTING UTILITIES, VALVES, AND FITTINGS SHALL BE RECORDED FROM THE MOST RECENT INFORMATION AVAILABLE TO THE ENGINEER. THIS INFORMATION IS NOT GUARANTEED. THE ENGINEER HAS CONDUCTED VISUAL SURVEYS OF THE PROJECT AREA THROUGH VISUAL INSPECTION AND 100' WIDE PHOTO WALKS. THE EXISTING UTILITIES AND LOCATIONS OF ALL EXISTING MANHOLES SHALL BE RECORDED FROM THE MOST RECENT INFORMATION AVAILABLE TO THE ENGINEER. THE ENGINEER HAS CONDUCTED VISUAL SURVEYS OF THE PROJECT AREA THROUGH VISUAL INSPECTION AND 100' WIDE PHOTO WALKS. THE EXISTING UTILITIES AND LOCATIONS OF ALL EXISTING MANHOLES SHALL BE RECORDED FROM THE MOST RECENT INFORMATION AVAILABLE TO THE ENGINEER. THE ENGINEER HAS CONDUCTED VISUAL SURVEYS OF THE PROJECT AREA THROUGH VISUAL INSPECTION AND 100' WIDE PHOTO WALKS. THE EXISTING UTILITIES AND LOCATIONS OF ALL EXISTING MANHOLES SHALL BE RECORDED FROM THE MOST RECENT INFORMATION AVAILABLE TO THE ENGINEER.
2. THE CONTRACTOR SHALL CONDUCT THE NECESSARY SURVEYS AND FIELD MEASUREMENTS TO VERIFY THE EXISTING UTILITIES AND LOCATIONS OF ALL EXISTING MANHOLES. THE CONTRACTOR SHALL BE RESPONSIBLE FOR OBTAINING ALL NECESSARY PERMITS AND APPROVALS FROM THE CITY ENGINEER OR DEPARTMENT OF PUBLIC WORKS. THE CONTRACTOR SHALL BE RESPONSIBLE FOR OBTAINING ALL NECESSARY PERMITS AND APPROVALS FROM THE CITY ENGINEER OR DEPARTMENT OF PUBLIC WORKS.
3. ALL UTILITIES SHOWN IN LANDSCAPE ARE TO BE MAINTAINED. THE CONTRACTOR SHALL BE RESPONSIBLE FOR OBTAINING ALL NECESSARY PERMITS AND APPROVALS FROM THE CITY ENGINEER OR DEPARTMENT OF PUBLIC WORKS.
4. ALL UTILITIES SHOWN IN LANDSCAPE ARE TO BE MAINTAINED. THE CONTRACTOR SHALL BE RESPONSIBLE FOR OBTAINING ALL NECESSARY PERMITS AND APPROVALS FROM THE CITY ENGINEER OR DEPARTMENT OF PUBLIC WORKS.
5. THE CONTRACTOR SHALL CONDUCT THE NECESSARY SURVEYS AND FIELD MEASUREMENTS TO VERIFY THE EXISTING UTILITIES AND LOCATIONS OF ALL EXISTING MANHOLES. THE CONTRACTOR SHALL BE RESPONSIBLE FOR OBTAINING ALL NECESSARY PERMITS AND APPROVALS FROM THE CITY ENGINEER OR DEPARTMENT OF PUBLIC WORKS.
6. THE CONTRACTOR SHALL CONDUCT THE NECESSARY SURVEYS AND FIELD MEASUREMENTS TO VERIFY THE EXISTING UTILITIES AND LOCATIONS OF ALL EXISTING MANHOLES. THE CONTRACTOR SHALL BE RESPONSIBLE FOR OBTAINING ALL NECESSARY PERMITS AND APPROVALS FROM THE CITY ENGINEER OR DEPARTMENT OF PUBLIC WORKS.
7. THE CONTRACTOR SHALL CONDUCT THE NECESSARY SURVEYS AND FIELD MEASUREMENTS TO VERIFY THE EXISTING UTILITIES AND LOCATIONS OF ALL EXISTING MANHOLES. THE CONTRACTOR SHALL BE RESPONSIBLE FOR OBTAINING ALL NECESSARY PERMITS AND APPROVALS FROM THE CITY ENGINEER OR DEPARTMENT OF PUBLIC WORKS.
8. THE CONTRACTOR SHALL CONDUCT THE NECESSARY SURVEYS AND FIELD MEASUREMENTS TO VERIFY THE EXISTING UTILITIES AND LOCATIONS OF ALL EXISTING MANHOLES. THE CONTRACTOR SHALL BE RESPONSIBLE FOR OBTAINING ALL NECESSARY PERMITS AND APPROVALS FROM THE CITY ENGINEER OR DEPARTMENT OF PUBLIC WORKS.
9. THE CONTRACTOR SHALL CONDUCT THE NECESSARY SURVEYS AND FIELD MEASUREMENTS TO VERIFY THE EXISTING UTILITIES AND LOCATIONS OF ALL EXISTING MANHOLES. THE CONTRACTOR SHALL BE RESPONSIBLE FOR OBTAINING ALL NECESSARY PERMITS AND APPROVALS FROM THE CITY ENGINEER OR DEPARTMENT OF PUBLIC WORKS.
10. THE CONTRACTOR SHALL CONDUCT THE NECESSARY SURVEYS AND FIELD MEASUREMENTS TO VERIFY THE EXISTING UTILITIES AND LOCATIONS OF ALL EXISTING MANHOLES. THE CONTRACTOR SHALL BE RESPONSIBLE FOR OBTAINING ALL NECESSARY PERMITS AND APPROVALS FROM THE CITY ENGINEER OR DEPARTMENT OF PUBLIC WORKS.



CONCEPTUAL PLANS - NOT FOR CONSTRUCTION - NOT FOR BID - FOR SITE PLAN SUBMITTAL / DRC REVIEW ONLY - SUBJECT TO GOVERNMENTAL AGENCIES APPROVAL

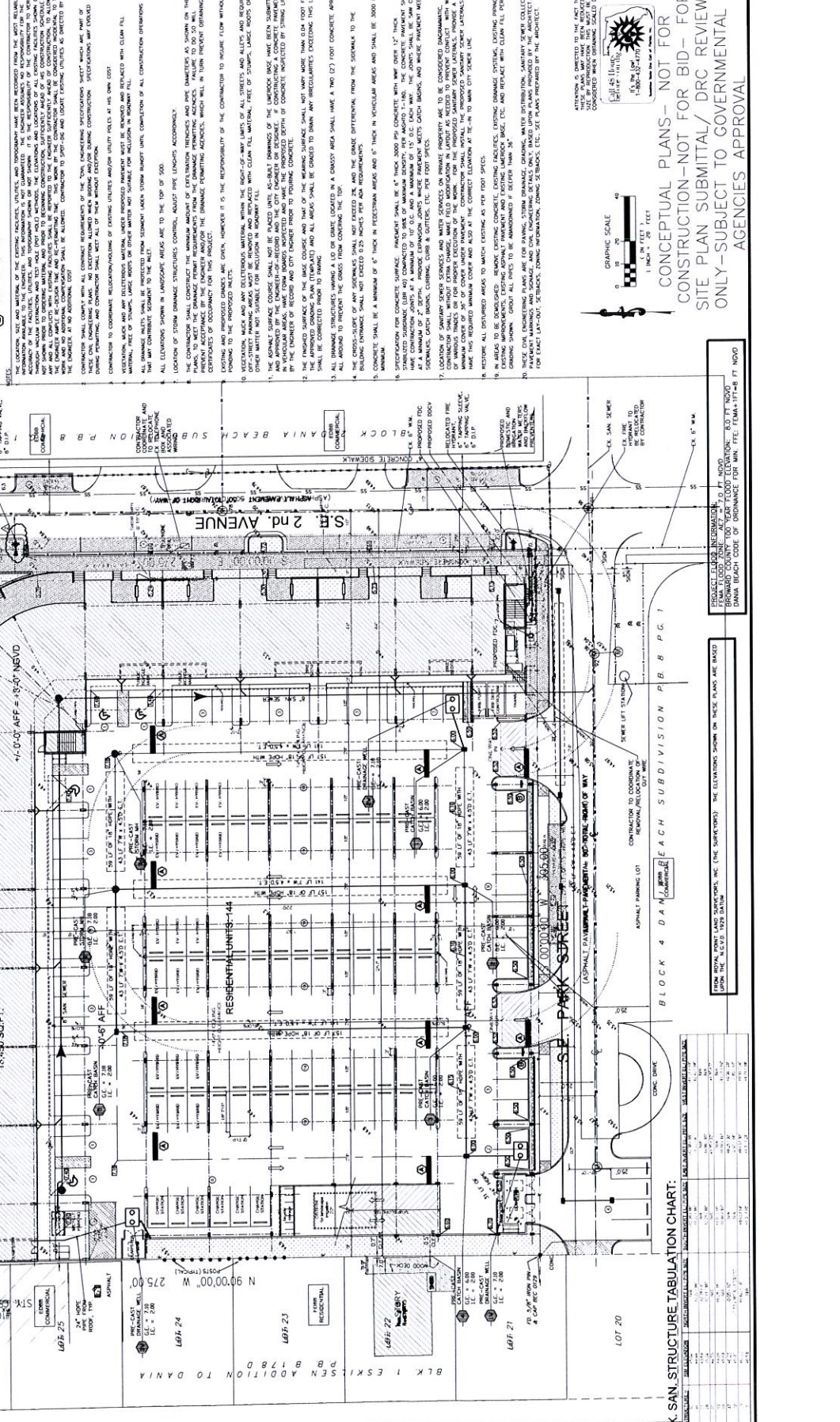
NOTES TO THE CONTRACTOR:
1. THE CONTRACTOR SHALL BE RESPONSIBLE FOR OBTAINING ALL NECESSARY PERMITS AND APPROVALS FROM THE CITY ENGINEER OR DEPARTMENT OF PUBLIC WORKS.
2. THE CONTRACTOR SHALL BE RESPONSIBLE FOR OBTAINING ALL NECESSARY PERMITS AND APPROVALS FROM THE CITY ENGINEER OR DEPARTMENT OF PUBLIC WORKS.
3. THE CONTRACTOR SHALL BE RESPONSIBLE FOR OBTAINING ALL NECESSARY PERMITS AND APPROVALS FROM THE CITY ENGINEER OR DEPARTMENT OF PUBLIC WORKS.

EX. SAN. STRUCTURE TABULATION CHART:

NO.	DESCRIPTION	DIAMETER (IN)	DEPTH (IN)	INVERT ELEVATION	OUTLET ELEVATION	REMARKS
1	24" DIAMETER	24"	10'	1.00	1.00	
2	24" DIAMETER	24"	10'	1.00	1.00	
3	24" DIAMETER	24"	10'	1.00	1.00	
4	24" DIAMETER	24"	10'	1.00	1.00	
5	24" DIAMETER	24"	10'	1.00	1.00	
6	24" DIAMETER	24"	10'	1.00	1.00	
7	24" DIAMETER	24"	10'	1.00	1.00	
8	24" DIAMETER	24"	10'	1.00	1.00	
9	24" DIAMETER	24"	10'	1.00	1.00	
10	24" DIAMETER	24"	10'	1.00	1.00	

PROJECT ELABORATION REQUIREMENTS:
1. THE CONTRACTOR SHALL BE RESPONSIBLE FOR OBTAINING ALL NECESSARY PERMITS AND APPROVALS FROM THE CITY ENGINEER OR DEPARTMENT OF PUBLIC WORKS.
2. THE CONTRACTOR SHALL BE RESPONSIBLE FOR OBTAINING ALL NECESSARY PERMITS AND APPROVALS FROM THE CITY ENGINEER OR DEPARTMENT OF PUBLIC WORKS.
3. THE CONTRACTOR SHALL BE RESPONSIBLE FOR OBTAINING ALL NECESSARY PERMITS AND APPROVALS FROM THE CITY ENGINEER OR DEPARTMENT OF PUBLIC WORKS.

CONTRACTOR TO COORDINATE:
1. THE CONTRACTOR SHALL BE RESPONSIBLE FOR OBTAINING ALL NECESSARY PERMITS AND APPROVALS FROM THE CITY ENGINEER OR DEPARTMENT OF PUBLIC WORKS.
2. THE CONTRACTOR SHALL BE RESPONSIBLE FOR OBTAINING ALL NECESSARY PERMITS AND APPROVALS FROM THE CITY ENGINEER OR DEPARTMENT OF PUBLIC WORKS.
3. THE CONTRACTOR SHALL BE RESPONSIBLE FOR OBTAINING ALL NECESSARY PERMITS AND APPROVALS FROM THE CITY ENGINEER OR DEPARTMENT OF PUBLIC WORKS.



CONTRACTOR TO COORDINATE:
1. THE CONTRACTOR SHALL BE RESPONSIBLE FOR OBTAINING ALL NECESSARY PERMITS AND APPROVALS FROM THE CITY ENGINEER OR DEPARTMENT OF PUBLIC WORKS.
2. THE CONTRACTOR SHALL BE RESPONSIBLE FOR OBTAINING ALL NECESSARY PERMITS AND APPROVALS FROM THE CITY ENGINEER OR DEPARTMENT OF PUBLIC WORKS.
3. THE CONTRACTOR SHALL BE RESPONSIBLE FOR OBTAINING ALL NECESSARY PERMITS AND APPROVALS FROM THE CITY ENGINEER OR DEPARTMENT OF PUBLIC WORKS.

NO.	DATE	DESCRIPTION	REVISION
1	01-20-14	OFF COMINGS	

1. GENERAL NOTES
A. ALL CONSTRUCTION SHALL BE IN ACCORDANCE WITH THE LATEST EDITIONS OF THE FOLLOWING CODES AND SPECIFICATIONS UNLESS OTHERWISE SPECIFIED:
1. THE NATIONAL BUILDING CODE, AS AMENDED
2. THE INTERNATIONAL RESIDENTIAL CODE, AS AMENDED
3. THE INTERNATIONAL MECHANICAL CODE, AS AMENDED
4. THE INTERNATIONAL PLUMBING AND MECHANICAL CODE, AS AMENDED
5. THE INTERNATIONAL ELECTRICAL CODE, AS AMENDED
6. THE INTERNATIONAL FIRE AND ALARM CODE, AS AMENDED
7. THE INTERNATIONAL FIRE CODE, AS AMENDED
8. THE INTERNATIONAL SAFETY CODE, AS AMENDED
9. THE INTERNATIONAL CODE OF ENERGY EFFICIENT BUILDING DESIGN, AS AMENDED
10. THE INTERNATIONAL GREEN BUILDING CONSTRUCTION CODE, AS AMENDED
11. THE INTERNATIONAL SCHEDULING CODE, AS AMENDED
12. THE INTERNATIONAL CONSTRUCTION CONTRACT DOCUMENTS, AS AMENDED
13. THE INTERNATIONAL CONSTRUCTION SCHEDULE, AS AMENDED
14. THE INTERNATIONAL CONSTRUCTION SPECIFICATIONS, AS AMENDED
15. THE INTERNATIONAL CONSTRUCTION METHODS, AS AMENDED
16. THE INTERNATIONAL CONSTRUCTION MATERIALS, AS AMENDED
17. THE INTERNATIONAL CONSTRUCTION EQUIPMENT, AS AMENDED
18. THE INTERNATIONAL CONSTRUCTION TOOLS, AS AMENDED
19. THE INTERNATIONAL CONSTRUCTION SUPPLIES, AS AMENDED
20. THE INTERNATIONAL CONSTRUCTION SERVICES, AS AMENDED
21. THE INTERNATIONAL CONSTRUCTION LABOR, AS AMENDED
22. THE INTERNATIONAL CONSTRUCTION MANAGEMENT, AS AMENDED
23. THE INTERNATIONAL CONSTRUCTION INSURANCE, AS AMENDED
24. THE INTERNATIONAL CONSTRUCTION BONDING, AS AMENDED
25. THE INTERNATIONAL CONSTRUCTION FINANCING, AS AMENDED
26. THE INTERNATIONAL CONSTRUCTION LEGAL, AS AMENDED
27. THE INTERNATIONAL CONSTRUCTION TAX, AS AMENDED
28. THE INTERNATIONAL CONSTRUCTION ACCOUNTING, AS AMENDED
29. THE INTERNATIONAL CONSTRUCTION MARKETING, AS AMENDED
30. THE INTERNATIONAL CONSTRUCTION COMMUNICATIONS, AS AMENDED
31. THE INTERNATIONAL CONSTRUCTION TECHNOLOGY, AS AMENDED
32. THE INTERNATIONAL CONSTRUCTION INNOVATION, AS AMENDED
33. THE INTERNATIONAL CONSTRUCTION SUSTAINABILITY, AS AMENDED
34. THE INTERNATIONAL CONSTRUCTION RESILIENCE, AS AMENDED
35. THE INTERNATIONAL CONSTRUCTION ADAPTABILITY, AS AMENDED
36. THE INTERNATIONAL CONSTRUCTION FLEXIBILITY, AS AMENDED
37. THE INTERNATIONAL CONSTRUCTION SCALABILITY, AS AMENDED
38. THE INTERNATIONAL CONSTRUCTION PORTABILITY, AS AMENDED
39. THE INTERNATIONAL CONSTRUCTION REUSABILITY, AS AMENDED
40. THE INTERNATIONAL CONSTRUCTION RECYCLABILITY, AS AMENDED
41. THE INTERNATIONAL CONSTRUCTION BIODEGRADABILITY, AS AMENDED
42. THE INTERNATIONAL CONSTRUCTION COMPOSTABILITY, AS AMENDED
43. THE INTERNATIONAL CONSTRUCTION INCINERABILITY, AS AMENDED
44. THE INTERNATIONAL CONSTRUCTION LANDFILLABILITY, AS AMENDED
45. THE INTERNATIONAL CONSTRUCTION WATER TREATABILITY, AS AMENDED
46. THE INTERNATIONAL CONSTRUCTION AIR TREATABILITY, AS AMENDED
47. THE INTERNATIONAL CONSTRUCTION SOIL TREATABILITY, AS AMENDED
48. THE INTERNATIONAL CONSTRUCTION SLURRY TREATABILITY, AS AMENDED
49. THE INTERNATIONAL CONSTRUCTION GASEOUS TREATABILITY, AS AMENDED
50. THE INTERNATIONAL CONSTRUCTION LIQUID TREATABILITY, AS AMENDED
51. THE INTERNATIONAL CONSTRUCTION SOLID TREATABILITY, AS AMENDED
52. THE INTERNATIONAL CONSTRUCTION PARTICULATE TREATABILITY, AS AMENDED
53. THE INTERNATIONAL CONSTRUCTION METAL TREATABILITY, AS AMENDED
54. THE INTERNATIONAL CONSTRUCTION ORGANIC TREATABILITY, AS AMENDED
55. THE INTERNATIONAL CONSTRUCTION INORGANIC TREATABILITY, AS AMENDED
56. THE INTERNATIONAL CONSTRUCTION NUTRIENT TREATABILITY, AS AMENDED
57. THE INTERNATIONAL CONSTRUCTION TRACE TREATABILITY, AS AMENDED
58. THE INTERNATIONAL CONSTRUCTION PESTICIDE TREATABILITY, AS AMENDED
59. THE INTERNATIONAL CONSTRUCTION HERBICIDE TREATABILITY, AS AMENDED
60. THE INTERNATIONAL CONSTRUCTION FUNGICIDE TREATABILITY, AS AMENDED
61. THE INTERNATIONAL CONSTRUCTION ANTIBIOTIC TREATABILITY, AS AMENDED
62. THE INTERNATIONAL CONSTRUCTION ANTIVIRAL TREATABILITY, AS AMENDED
63. THE INTERNATIONAL CONSTRUCTION ANTI-CANCER TREATABILITY, AS AMENDED
64. THE INTERNATIONAL CONSTRUCTION ANTI-AGING TREATABILITY, AS AMENDED
65. THE INTERNATIONAL CONSTRUCTION ANTI-DEMENTIA TREATABILITY, AS AMENDED
66. THE INTERNATIONAL CONSTRUCTION ANTI-ALZHEIMER TREATABILITY, AS AMENDED
67. THE INTERNATIONAL CONSTRUCTION ANTI-PARKINSON TREATABILITY, AS AMENDED
68. THE INTERNATIONAL CONSTRUCTION ANTI-ALZHEIMER TREATABILITY, AS AMENDED
69. THE INTERNATIONAL CONSTRUCTION ANTI-PARKINSON TREATABILITY, AS AMENDED
70. THE INTERNATIONAL CONSTRUCTION ANTI-ALZHEIMER TREATABILITY, AS AMENDED
71. THE INTERNATIONAL CONSTRUCTION ANTI-PARKINSON TREATABILITY, AS AMENDED
72. THE INTERNATIONAL CONSTRUCTION ANTI-ALZHEIMER TREATABILITY, AS AMENDED
73. THE INTERNATIONAL CONSTRUCTION ANTI-PARKINSON TREATABILITY, AS AMENDED
74. THE INTERNATIONAL CONSTRUCTION ANTI-ALZHEIMER TREATABILITY, AS AMENDED
75. THE INTERNATIONAL CONSTRUCTION ANTI-PARKINSON TREATABILITY, AS AMENDED
76. THE INTERNATIONAL CONSTRUCTION ANTI-ALZHEIMER TREATABILITY, AS AMENDED
77. THE INTERNATIONAL CONSTRUCTION ANTI-PARKINSON TREATABILITY, AS AMENDED
78. THE INTERNATIONAL CONSTRUCTION ANTI-ALZHEIMER TREATABILITY, AS AMENDED
79. THE INTERNATIONAL CONSTRUCTION ANTI-PARKINSON TREATABILITY, AS AMENDED
80. THE INTERNATIONAL CONSTRUCTION ANTI-ALZHEIMER TREATABILITY, AS AMENDED
81. THE INTERNATIONAL CONSTRUCTION ANTI-PARKINSON TREATABILITY, AS AMENDED
82. THE INTERNATIONAL CONSTRUCTION ANTI-ALZHEIMER TREATABILITY, AS AMENDED
83. THE INTERNATIONAL CONSTRUCTION ANTI-PARKINSON TREATABILITY, AS AMENDED
84. THE INTERNATIONAL CONSTRUCTION ANTI-ALZHEIMER TREATABILITY, AS AMENDED
85. THE INTERNATIONAL CONSTRUCTION ANTI-PARKINSON TREATABILITY, AS AMENDED
86. THE INTERNATIONAL CONSTRUCTION ANTI-ALZHEIMER TREATABILITY, AS AMENDED
87. THE INTERNATIONAL CONSTRUCTION ANTI-PARKINSON TREATABILITY, AS AMENDED
88. THE INTERNATIONAL CONSTRUCTION ANTI-ALZHEIMER TREATABILITY, AS AMENDED
89. THE INTERNATIONAL CONSTRUCTION ANTI-PARKINSON TREATABILITY, AS AMENDED
90. THE INTERNATIONAL CONSTRUCTION ANTI-ALZHEIMER TREATABILITY, AS AMENDED
91. THE INTERNATIONAL CONSTRUCTION ANTI-PARKINSON TREATABILITY, AS AMENDED
92. THE INTERNATIONAL CONSTRUCTION ANTI-ALZHEIMER TREATABILITY, AS AMENDED
93. THE INTERNATIONAL CONSTRUCTION ANTI-PARKINSON TREATABILITY, AS AMENDED
94. THE INTERNATIONAL CONSTRUCTION ANTI-ALZHEIMER TREATABILITY, AS AMENDED
95. THE INTERNATIONAL CONSTRUCTION ANTI-PARKINSON TREATABILITY, AS AMENDED
96. THE INTERNATIONAL CONSTRUCTION ANTI-ALZHEIMER TREATABILITY, AS AMENDED
97. THE INTERNATIONAL CONSTRUCTION ANTI-PARKINSON TREATABILITY, AS AMENDED
98. THE INTERNATIONAL CONSTRUCTION ANTI-ALZHEIMER TREATABILITY, AS AMENDED
99. THE INTERNATIONAL CONSTRUCTION ANTI-PARKINSON TREATABILITY, AS AMENDED
100. THE INTERNATIONAL CONSTRUCTION ANTI-ALZHEIMER TREATABILITY, AS AMENDED

